

Fiber Probe Couplers for FTIR-spectrometers



art photonics



FlexiSpec®

Variety of fiber probes coupling
with any FTIR spectrometer

Compatible or customized for FTIR
sample chamber or external port

Mirror optics for broad spectral range

SMA-terminated in/out ports for any
fiber probe with SMA-connectors

Pre-aligned for distinct FTIR-models
or adjustable to optimize coupling



FlexiSpec® fiber optic probes can be coupled with any FTIR spectrometer by standard fiber coupler produced by manufacturers of FTIR spectrometers and FTIR accessories. **art photonics** can provide customized fiber couplers / launches for various FTIR-models – with or without sample chamber. FTIR coupling with **FlexiSpec®** probes eliminates the need of samples preparation and enables remote monitoring of molecular reactions in-line.

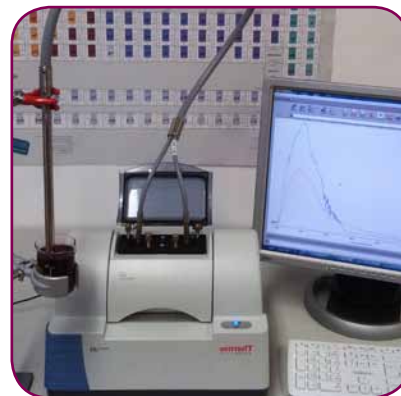
Applications:

- Easy coupling of any fiber probe to any FTIR spectrometer - to enable *in-line* applications
- Upgrade of lab FTIR-models to remote process-spectroscopy
- Can be used as any other accessories in sample chamber



iFC1 – Fiber Coupler

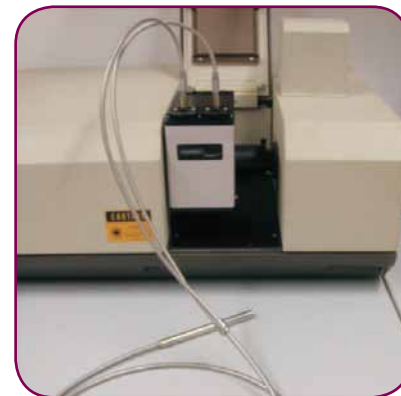
Designed for different fiber probes, iFC1 coupler connects them with FTIR-spectrometer iS5 from Thermo Fisher using iD1 accessories platform. Mirror optics covers a broad spectral range and adjustable for SMA-terminated input/output ports.



FiberMate-2™

from Harrick Scientific Inc.

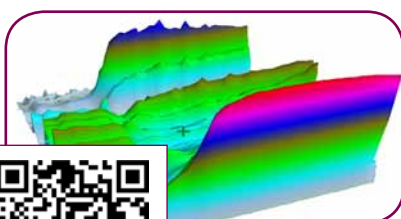
Equipped with large ellipsoidal mirrors, the FiberMate2™ efficiently couples fiber probe with different models of FTIR-spectrometers. The FiberMate2™ utilizes mirror optics coupled to two SMA connectors. It is equipped with PermaPurge™ to maintain the system purge.



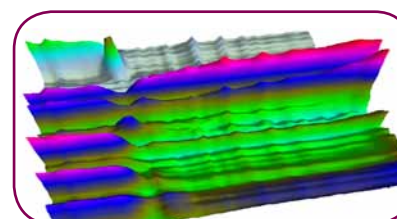
FT-FiberSpec

dual mirror fiber coupler

Two identical mirror couplers are designed to focus FTIR-beam to fiber probe input or refocus it from the probe output to FTIR-detector. Can be installed directly at sample chamber windows, at external FTIR port or be fixed with a customized holder inside sample chamber. Mirror optics covers a broad spectral range and can be adjusted to SMA-connector position to maximize coupling efficiency. Mirrors can rotate around beam axis for convenient probe connection to FTIR at any angle.



Fiber Couplers can couple any FTIR-spectrometer with various FlexiSpec® probes and upgrade it for in-line ATR-, Transmission or Reflection process-spectroscopy in a broad spectral range.



Download PDF
via smartphone

art photonics GmbH
Schwarzschildstr. 6
12489 Berlin Germany

Phone + 49 (0) 30 6789 4153
sales@artphotonics.com
www.artphotonics.com

QAS Int. - certified
DIN EN ISO 9001:2008
Zertifikat Nr. A1887GER

