

# microwave photonic systems

MP-2320-SW, High Isolation RF Switch

## 3 GHz High Isolation Absorptive RF Switch



### Provides in excess of 75 dB isolation from 100 MHz to 3.0 GHz

Designed to support RF transmission of signals spanning the frequency range of 100 MHz to 3.0 GHz, the MP-2320-SW brings a high isolation switch capability to the MP-2320 product family. Available in both flange mount and plug-in versions, the MP-2320-SW can provide up to 75 dB port to port isolation, and if configured with the TTL option, can support switching times of less than 2 $\mu$ s.

The plug-in version offers panel mount buttons which allow the user to place the switch into automatic failover mode or manually select the desired port. Integrated LEDs provide a visual reference of switch status and module health. The plug-in can be addressable using the chassis Monitor and Control (M&C) plug-in, whereas the flange mount is addressable using the RS-232 serial port.

Contact MPS for any questions or to request performance data.

### Specifications

Frequency	100 MHz to 3000 MHz
Insertion Loss	3 dB (max)
VSWR (max)	1.5:1
Isolation	60 dB (standard), 75 dB (enhanced)
Response Time (Plug-In)	< 2 ms (typical) , 90%/10% RF
Response Time (Flange Mount)	< 1 ms (typical) ,90%/10% RF
Response Time TTL (Flange Mount)	2 $\mu$ s ( typical) , 90%/10% RF
1 dB Comp. Level	+25 dBm (min)
Input IP2	+70 dBm (min)
Input IP3	+65 dBm (min)
RF Ports	SMA(F), 50 Ohm
Operational Temperature	-40°C to +65°C
Storage Temperature	-55°C to +85°C
Local Alarms / Remote Alarms	Panel LEDs / Fault Relay, RS 232, 485 or Ethernet

### Applications

- 1:1 Redundant Switching
- Scaleable 1:N Redundancy
- On/Off Switch for Muting / Quenching
- Loop Back Testing

### Features

- Manual or Auto Switching
- Low Insertion Loss
- Standard or Enhanced Isolation (Option)
- Fast Switching TTL (Option)
- C-Band Models Available
- 1 Year Full, 2 Year Limited Warranty

Microwave Photonic Systems, Inc.

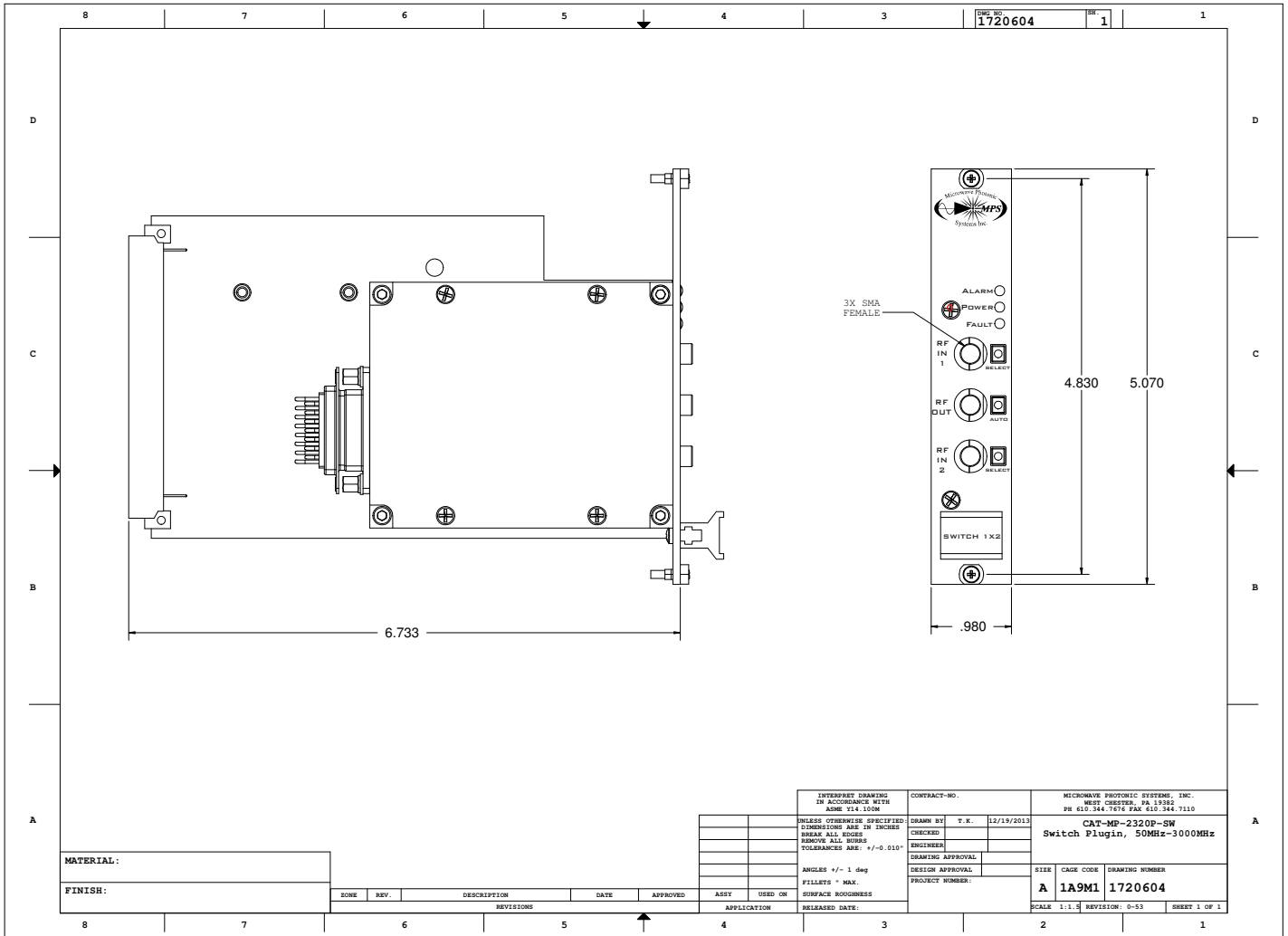
1155 Phoenixville Pike, Unit 106, West Chester, PA 19380, Toll-Free: 888-868-8967

Phone: 610-344-7676, Fax: 610-344-7110, E-mail: info@b2bphotonics.com, Internet: b2bphotonics.com

100204 CAGE 1A9M1

MP-2320-SW, High Isolation RF Switch

# 3 GHz High Isolation Absorptive RF Switch



Plug-In Mechanical Drawing

Microwave Photonic Systems, Inc.  
 1155 Phoenixville Pike, Unit 106, West Chester, PA 19380, Toll-Free: 888-868-8967  
 Phone: 610-344-7676, Fax: 610-344-7110, E-mail: info@b2bphotonics.com, Internet: b2bphotonics.com

100204 CAGE 1A9M1

