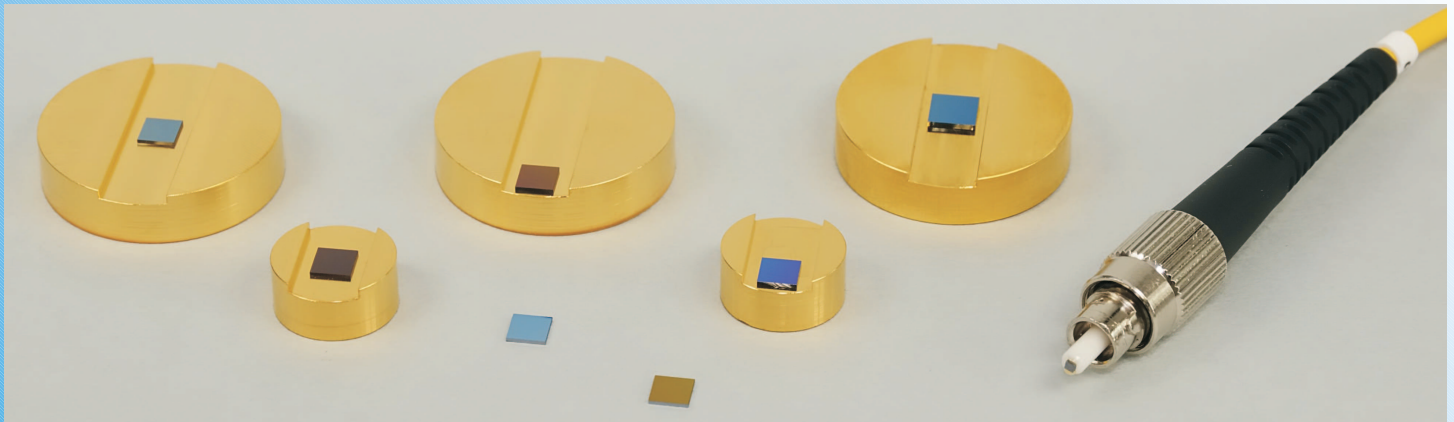
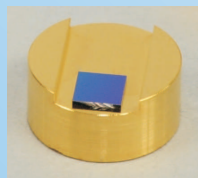
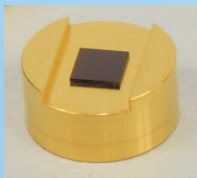


saturable absorbers - mounting types



SAM™ - saturable absorber mirror

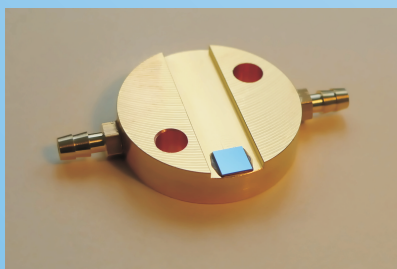
- unmounted chip
- batch of 5 small unmounted chips (1mm x 1mm)
- glued or soldered on a gold plated copper mount
- mounts of 12.7mm (1/2"), 25.0mm or 25.4mm (1") diameter
- edge or center mounting



- mounted on a single mode fiber with FC/PC or FC/APC connector



- for high power applications: soldered on a water cooled gold plated copper mount (25.0mm)



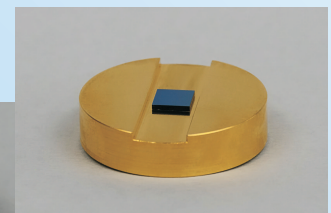
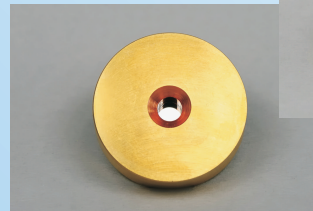
soldered chip on water cooled mount with 25.0mm diameter

New

- custom mounts on request

SOC - saturable output coupler

- unmounted
- glued or soldered on a gold plated copper mount with 4mm diameter clearance hole
- mounts of 12.7mm (1/2") or 25.4mm (1") diameter
- edge or center mounting
- mounted on a single mode fiber with FC/PC or FC/APC connector
- custom mounts on request



SA - saturable absorber

- unmounted
- batch of 5 small unmounted chips (1mm x 1mm)
- glued on a gold plated copper mount
- mounts of 12.7mm (1/2"), 25.0mm or 25.4mm (1") diameter and thickness of 3mm or 6mm
- edge or center mounting
- mounted inside a single mode fiber with FC/PC connectors
- custom mounts on request

