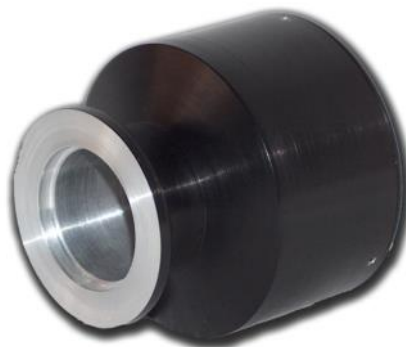


Series PEM VUV

Special design with vacuum flange for 157nm and all other wavelengths where stirring gas or encapsulated beam guiding are used. The detectors are leak tested.



	PEM 10 VUV	PEM 20 VUV	PEM 24 VUV	PEM 30 K VUV
Aperture	10 mm	20 mm	24 mm	30 mm
Sensitivity	30 .. 50 V/J at 1 MΩ	15 .. 25 V/J at 1 MΩ	200 V/J at 1 MΩ	1.5 .. 2.5V/J at 1 MΩ
Repetition Rate	50 Hz at 1 MΩ	150 Hz at 1 MΩ	300 Hz at 1 MΩ	50 Hz at 1 MΩ
max. average power	5 W	5 W	5 W	30 W
accuracy	±5 %	±5 %	±5 %	±5 %
max. energy density (t=10ns)	50 mJ/cm ²	50 mJ/cm ²	100 mJ/cm ²	300 mJ/cm ²
Max. peak power density	5 MW/cm ²	5 MW/cm ²	5 MW/cm ²	30 MW/cm ²
Detection threshold	100 μJ	200 μJ	5 μJ	1 mJ
Window	MgF ₂	MgF ₂	none	none
Connector	SMA	SMA	BNC	BNC
Vacuum connector	KF 16 ND	KF 25 ND	KF 25 ND	KF 40 ND
Dimension (incl. connectors)	Ø30 mm, length 54 mm	Ø 42 mm, length 72 mm	Ø55 mm, length 65 mm	Ø100 mm, length 96 mm
Read out unit	PEM 710 or Scope			