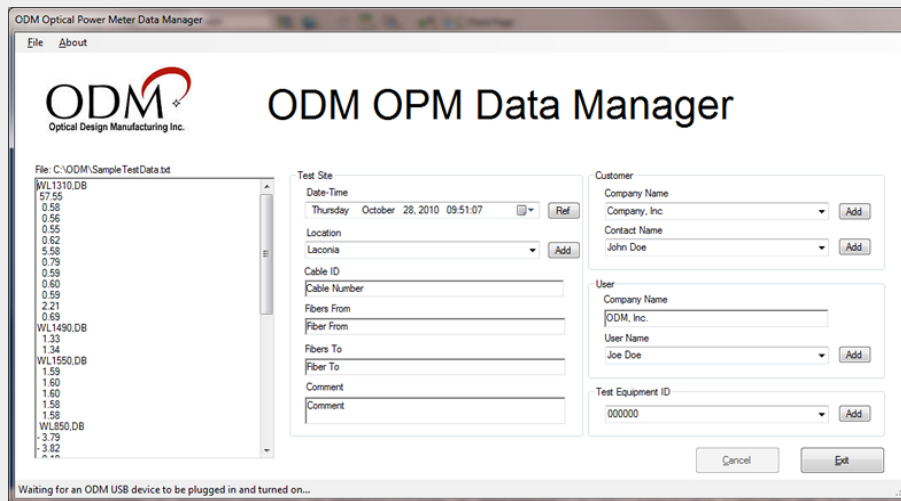


RP 460 Application/ 応用

Use the RP 450, RP 455 or RP 460 to check the output at the patch panel or wall outlet in the premise, telecom or broadband market. Connection to the fiber under test is made via the universal 2.5 mm adapter. Additional male or female connector adapter styles are available.

When using the ODM RP 460, test data can be downloaded to a PC into the ODM OPM Data Manager. After download, test data can be exported to Excel, Word or PDF file.



ODM OPM Data Manager

RP 460 Ordering Information

Part #: RP 460-02

Part #: RP 460-03

Part #: RP 460-04

Includes: Padded carry case, 2.5mm universal connector adapter, mini USB to USB cable, CR2 battery, and manual. Screw-on adapters are available for all popular connector styles. All power meters from ODM may be combined with LED or Laser Sources (TP 200 or DLS 300 series) providing a complete test kit solution.

ODM Inc. offers a complete line of [accessories](#) - including patch cords, adapters, and cleaning aids - for all aspects of optical testing.