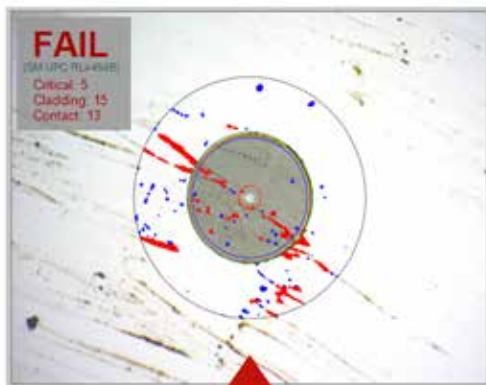


Features

- ▶ Automatic PASS/FAIL analysis equipped to meet IEC 61300-3-35, Ed. 1
- ▶ USB or WiFi streaming: easily connect with laptops, smartphones, and tablets
- ▶ Free ODM InSpec™ app for PC, Android, and Apple devices
- ▶ Unique external focus system and enhanced magnification produce crystal clear high-definition images
- ▶ Voice command support for hands-free imaging



InSpec™ for Windows included. App for Android & Apple devices available online.



Description

The VIS 400-HDP inspection scope allows test technicians to inspect and grade fiber endfaces by offering the most detailed image possible. When used in conjunction with ODM's proprietary InSpec™ software the VIS 400 ensures compliance with the IEC 61300-3-35 standard.

Using the simple Insert Focus Analyze (IFA) method, ODM's software grades fiber ends based on the four critical zones outlined in the industry standard. Tapping or mousing over debris allows technicians to see details on each defect. The VIS 400's high-definition camera allows the software to distinguish defects as small as one micron, eliminating guesswork when determining endface acceptability.

The VIS 400 provides a high-definition image with a 860µm x 640µm field of view, allowing technicians to see debris outside IEC specified zones. Debris on the periphery of the fiber end should be cleaned to avoid migration during connector mating. The VIS 400 allows technicians to ensure connectors are completely clean for the most reliable optical link.

With ODM's optional Portable Access Device (PA 250), technicians can stream live images of fiber ends from the VIS 400 to the InSpec™ app on any Wi-Fi enabled PC, smartphone, or tablet. The InSpec™ app allows users to inspect, grade, and archive images on their wireless device.

The VIS 400-HDP kit contains connector cleaning tools for up to 500 cleanings and adapter tips for all the most popular connectors (LC, SC, 1.25mm and 2.5mm Universal), all packaged in a durable carry case.

Specifications

Camera	Megapixel – High Definition – CMOS Sensor
Field of View	860 x 640µm
Resolution	<1 micron
Lighting Technique	Coaxial
Focus System	ODM Proprietary External Focus System
Probe Output	USB 2.0
PASS/FAIL analysis	User-selectable or IEC 61300-3-35-compliant software included
Size	Probe – 7" x 1" x .75" (180mm x 25mm x 19mm)
Weight (probe, case and tips)	1.2 lbs (.54kg)

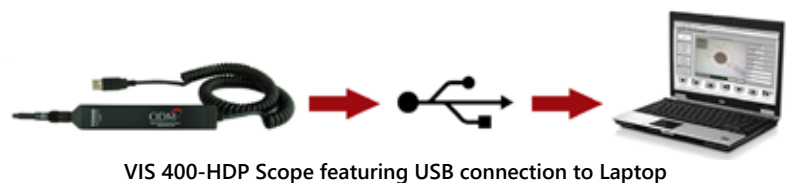
Ordering Information

MODEL	INCLUDES
VIS 400-HDP	Hard carry case, auto analysis software (InSpec™), 2.5mm, 1.25mm, LC, SC adapter tips, cleaning kit for up to 500 cleanings
PA 250	Portable Access Device with wireless connectivity to PCs, laptops, tablets and smartphones

Accessory Connector Tips:

- AC 040B – SC Adapter
- AC 041B – SC/APC Adapter
- AC 042B – FC Adapter
- AC 043B – FC/APC Adapter
- AC 044B – LC Adapter
- AC 045B – LC/APC Adapter
- AC 046B – ST Adapter
- AC 047B – MTP/APC Adapter
- AC 050B – MTP Straight Adapter
- AC 048B – 1.25 mm Universal Adapter
- AC 049B – 2.50 mm Universal Adapter
- AC 100B – ODC Pin Adapter
- AC 101B – ODC Socket Adapter
- AC 105 – ODC Plate
- AC 104B – FC 60-Degree Adapter
- AC 107B – LC 60-Degree Adapter
- AC 109B – SC 60-Degree Adapter

VIS 400-HDP Interface



Optical Design Manufacturing, Inc.
 143 Lake Street, Suite 1E, Laconia, NH 03246
 Phone: (603) 524-8350 FAX: (603) 524-8332
www.odm-inc.com
sales@odm-inc.com