

FAMILY OWNED AND OPERATED SINCE 1933



Hannay Reels®
The reel leader.

Cable Reels



**The
Hannay
Way**

Rescue and Haz-mat Operations • Agriculture
Grounds Maintenance and MRO • Electric Tools
Video Inspection • Portable Lighting • Broadcast/Entertainment
Auxiliary Leads for Power Generation • Hoist and Crane Operations

www.hannay.com

Pride in workmanship • Reels built to order • Consistent quality • Service with integrity • Value for your dollar



MANUAL AND POWER REWIND REELS

To handle live electric cable.

Series CR1600

- Removable direct crank rewind.
- Spring tension brake.

Series ECR1600

- Optional comet brake is available.
- Some roller options may prohibit the use of our molded chain guard.

Series CR6600

- Gear-driven crank rewind.
- Chain and sprocket drive powered by electric, compressed air, or hydraulic motor.
- Auxiliary rewind and pinion brake standard.
- Consult factory for other brakes.
- 3-conductor 45 amp collector assembly with #8 gauge wiring.
- Double brushes per circuit. Brushes are copper graphite, copper alloy rings.
- Additional conductors or higher amperage (up to 100 amps) are available at extra cost, must be specified. (300 amps possible with custom design).
- Silver collector assemblies are available.
- Rollers and roller mounting brackets are accessory items. Specify roller position.



Optional External Mounting Brackets

Part No. 9906.0025

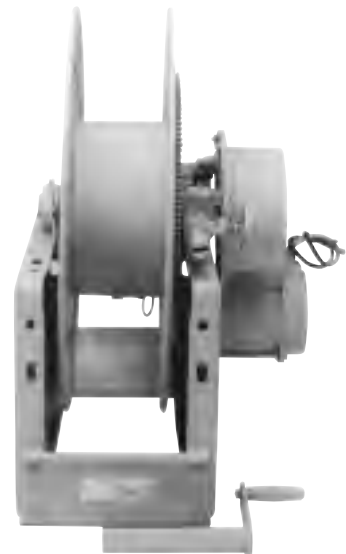
Available for CR1600 & ECR1600 Models



Series CR1600 (Manual Rewind)
Left Top Shown (Standard Configuration is Right Top)



Series ECR1600 (Power Rewind)
Standard Configuration shown



Series CR6600 (Power Rewind)
Standard Configuration shown



Parts Drawing: Series CR1600 – ISO 76, Series CR6600 – ISO 45

Model Number	Cable Capacity of Reel feet m.						Approx. Weight Crank Rewind lb. kg.		Reel Dimensions*** inches mm.												
	GA./NO. OF CONDUCTORS						NET	SHIP	A	B	C	D	E CRANK	E PWR.	F CRANK	F PWR.	G	H	X	Y	
	14/3	12/3	10/3	8/3	12/4	10/4															
For Power Rewind See Note 5	O.D. (in)	.530	.600	.690	.750	.670	.750														
	O.D. (mm)	14	15	18	19	17	19														
CR1614-17-18		225 69	175 53	100 30	— —	100 30	100 30	30 14	45* 20	11 279	6 152	6 152	14.5 368	16.5 419	19 483	21.75 552	17.5 445	18.12 460	9.88 251	9.5 241	10 254
CR1616-17-18		300 91	200 61	150 46	— —	150 46	150 46	32 15	45* 20	13 330	8 203	6 152	14.5 368	16.5 419	19 483	23.75 603	19.5 495	18.12 460	9.88 251	11.5 292	10 254
CR1618-17-18		350 107	275 84	200 61	— —	200 61	200 61	33 15	47* 21	15 381	10 254	6 152	14.5 368	16.5 419	19 483	25.75 654	21.5 546	18.12 460	9.88 251	13.5 343	10 254
CR1620-17-18		450 137	350 107	250 76	— —	250 76	225 69	34 15	50* 23	17 432	12 305	6 152	14.5 368	16.5 419	19 483	27.75 705	23.5 597	18.12 460	9.88 251	15.5 394	10 254
CR6614-19-20		200 61	150 46	100 30	— —	— —	— —	113 51	148 67	11 279	5.5 140	10.5 267	20.5 521	22 559	22 559	16 406	17.75 451	21.5 546	12.12 308	5.75 146	16.75 425
CR6614-23-24		— —	300 91	225 69	175 53	— —	— —	120 54	155 70	11 279	5.5 140	10.5 267	20.5 521	23 584	23 584	16 406	17.75 451	23.5 597	12.12 308	5.75 146	16.75 425
CR6614-25-26		— —	350 107	250 76	200 61	— —	— —	133 60	168 76	11 279	5.5 140	10.5 267	25.5 648	24.75 629	24.75 629	16 406	17.75 451	27.88 708	15.5 394	5.75 146	21.75 552

Notes:

- Specifications subject to change.
- Upon request, reels can be supplied with drum lengths other than shown and with disc sizes in other diameters.
- Dimensions reflect pressed frames.
- Weights shown in chart are for crank rewind models. Add these amounts for power rewind models.

Series CR1600 **Net (lbs.)** **Ship (lbs.)** Net (kg.) Ship (kg.)

Electric **18** **18** 8.2 8.2

Hydraulic **15** **15** 6.8 6.8

Air **15** **15** 6.8 6.8

Series CR6600 **Net (lbs.)** **Ship (lbs.)** Net (kg.) Ship (kg.)

Electric **40** **40** 18.1 18.1

Hydraulic **20** **20** 9.1 9.1

Air **20** **20** 9.1 9.1

- When ordering power rewind models, prefix model number with:

A = Air Rewind E = Electric Rewind (Series CR1600)

EP = Electric Rewind (Series CR6600) HD = Hydraulic Rewind

(Air rewind reels are supplied with control valve and hose;

12v and 24v DC rewind reels are supplied with switch and solenoid; 115v AC

rewind reels are not supplied with switch but can be ordered separately;

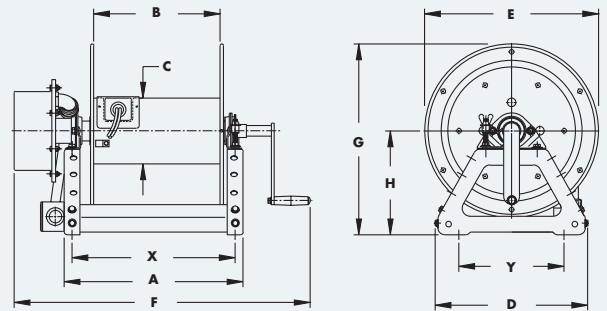
hydraulic rewind reels are not supplied with control valve.)

- Add 2-1/8" to "A" dimension when using external mounting brackets on CR1600, ECR1600 series reels.

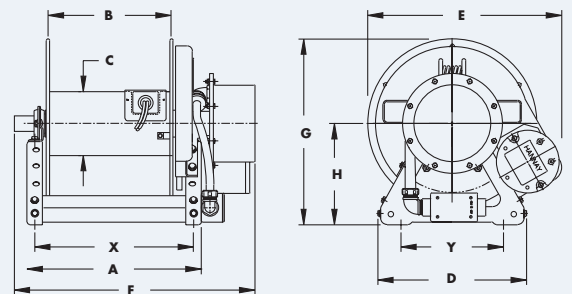
7. Be sure to check dimensions and weights prior to ordering.

* When shipped as a parcel package (via FedEx or UPS ground).

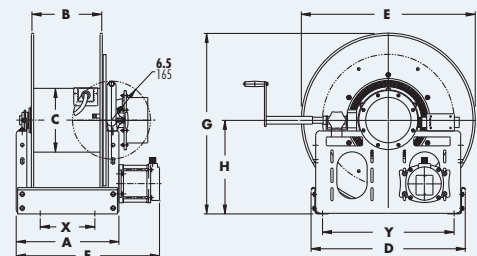
***x,y indicate mounting holes



Series CR1600 (Manual Rewind)



Series ECR1600 (Power Rewind)



Series CR6600 (Power Rewind)