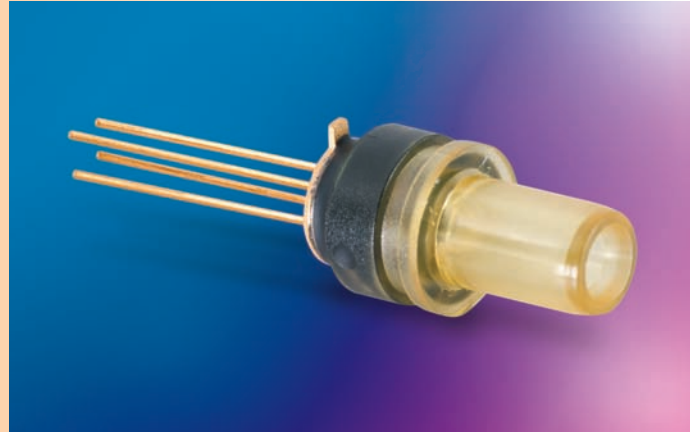


# E-RT VCSEL RECEPTACLE

## Features:

- FC, ST, SC and LC receptacle for Multi-mode fiber communication
- Package with Monitor PD
- Design for 1.25/2.5 Gbps data rate operation
- Common anode and Common cathode



## Performance Specifications:

### Electro-Optical Specifications

PARAMETER	SYMBOL	UNIT	MIN.	TYP.	MAX.	TEST CONDITIONS
Threshold Current	$I_{th}$	mA		1.5	3	CW
Slope Efficiency	$\eta$	mW/mA	0.04	0.1	0.16	$I_F=7mA$
Peak Wavelength	$\lambda_P$	nm	840	850	860	$I_F=7mA$
RMS Spectral Width	$\Delta \lambda_P$	nm			0.85	$I_F=7mA$
Forward Voltage	$V_f$	Volt		1.8	2.2	$I_F=7mA$
Series Resistance	$R_s$	$\Omega$		50		$I_F=7mA$

### Temperature Characteristics

PARAMETER	SYMBOL	UNIT	MIN.	TYP.	MAX.	TEST CONDITIONS
Threshold Current Temperature Variation	$\Delta I_{th}$	mA		1.5		0°C to 85°C
Slope Efficiency Temperature Variation	$\Delta \eta / \Delta T$	% / °C		-0.4		$I_F=7mA$ , 0°C to 85°C
Peak Wavelength Temperature Variation	$\Delta \lambda_P / \Delta T$	nm / °C		0.06		$I_F=7mA$ , 0°C to 85°C

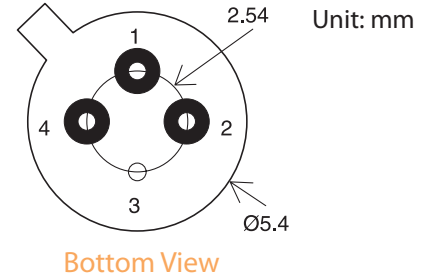
### Absolute Maximum Ratings (T=25 °C unless otherwise stated )

PARAMETER	SYMBOL	UNIT	MIN.	MAX.
Storage Temperature	$T_{stg}$	°C	-40	100
Operating Temperature	$T_{op}$	°C	0	85
Lead Solder Temperature	$T_{sold}$	°C	260°C for 10 seconds	
Continuous Reverse Voltage	$V_R$	Volt		5 (@10uA)
Continuous Forward Current	$I_F$	mA		12
Laser Forward Current, Instantaneous	$I_F$	mA		17

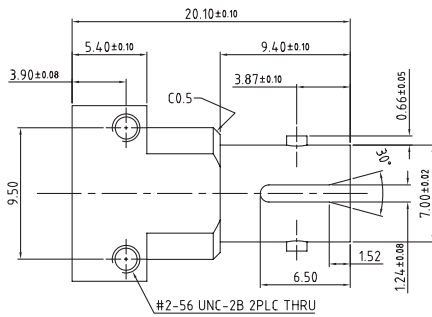
# VCSEL RECEPTACLE

## Outline Dimension:

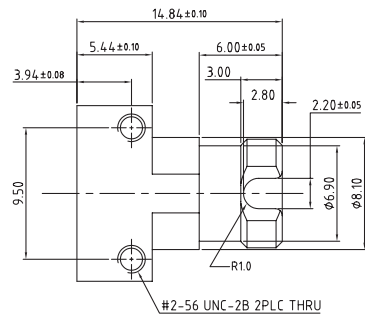
PIN Position	Description			
	1	2	3	4
A (Common Anode)	VCSEL Anode PD Cathode	PD Anode	Case	VCSEL Cathode
B (Common)	VCSEL Cathode PD Anode	PD Cathode	Case	VCSEL Anode



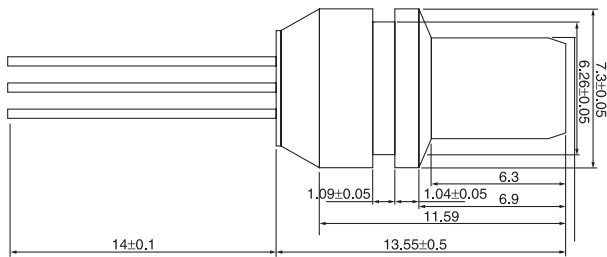
## Mechanical Dimension:



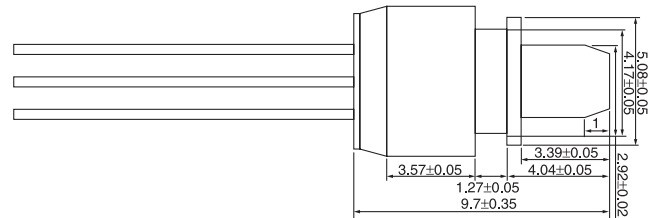
E-RT-5O0850STXM1-N4C-0



E-RT-5O0850FCXM1-N4C-0



E-RT-5O0850OSXP1-N4C-0



E-RT-5O0850OLXP1-N4C-0

## Ordering Information:

E - RT - 5 O 0850     - N4B - 0

Data Rate	_____			
5	1.25 Gbps	6	2.5 Gbps	
Laser Type	_____			
O	Oxide VCSEL			
Wavelength	_____			
0850	850nm			
Connector Type	_____			
ST	ST	FC	FC	
OS	OSA SC	OL	OSA LC	
Pin Assignment	_____			
A	A Type	B	B Type	
Exterior	_____			
M1	Metal Housing	P1	Plastics Housing	