

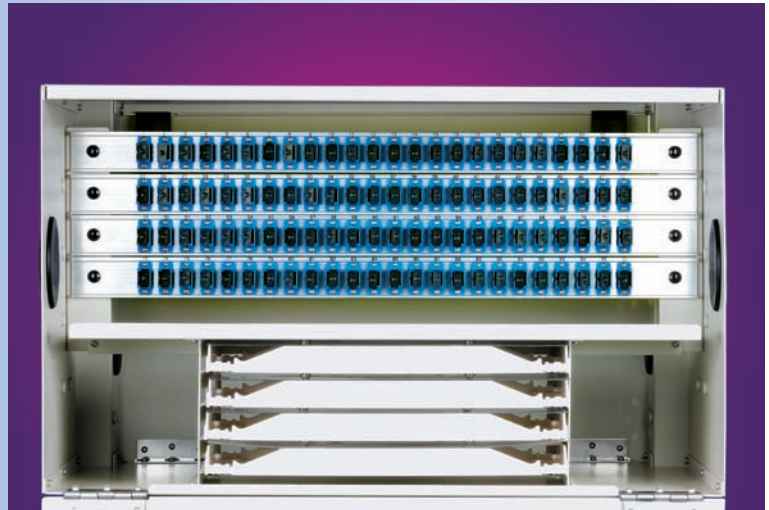
# D-RP FIBER OPTIC RACK-MOUNT PATCHPANELS

## Features:

- Quick and easy access
- Modular design for fiber optic cable patching
- Up to 108 fiber counts per each panel
- Removable front and rear steel covers
- Retractable splicing trays
- Various removable adaptor plates

## Applications:

- Telecommunications
- Local area network
- CATV
- Fiber to the home



## Performance Specifications:

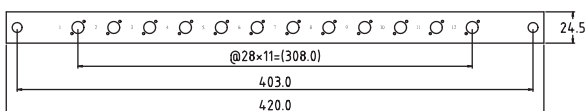
Model Fiber Counts	Number of Splicing tray(s)	Number of Adaptor Plates	Dimensions HxWxD (mm)
D-RP- □ -012 -FC(#21)	D-ST-02 x 1	D-AP- □□ x 1	431 x 56 x 298
D-RP- □ -012 -SC(#20)	D-ST-02 x 1	D-AP- □□ x 1	431 x 56 x 298
D-RP- □ -024 -FC(#18)	D-ST-02 x 1	D-AP- □□ x 1	431 x 78 x 298
D-RP- □ -024 -SC(#4)	D-ST-02 x 1	D-AP- □□ x 1	431 x 56 x 298
D-RP- □ -048 -FC(#5)	D-ST-02 x 2	D-AP- □□ x 2	431 x 214 x 302
D-RP- □ -048 -SC(#4)	D-ST-02 x 2	D-AP- □□ x 2	431 x 170 x 302
D-RP- □ -096 -FC(#5)	D-ST-02 x 4	D-AP- □□ x 4	431 x 344 x 302
D-RP- □ -096 -SC(#4)	D-ST-02 x 4	D-AP- □□ x 4	431 x 258 x 302

## Remarks :

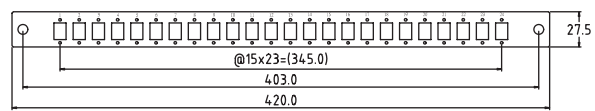
- 1) Typical adaptor insertion loss: 0.15dB for Singlemode; 0.3dB for Multimode, please refer to P-AD catalogue
- 2) The bending curvature of splicing tray: > 40 mm
- 3) 19" and 23" rack mount kits are provided as standard accessories.

## Physical Dimensions:

Unit: mm



D-AP-02 (FC Type)



D-AP-04 (SC Type)

# FIBER OPTIC RACK-MOUNT PATCHPANELS

## Ordering Information:

D - RP -  -

### Type of Cabinet

- A Type A
- X Others, please specify

### Fiber Count

- 024 24 counts
- 048 48 counts
- 096 96 counts

D - AP -

### Adaptor Plate

- 01 Blank
- 02 FC type
- 03 ST type
- 04 SC type

Adaptors are not included in the plate.  
Please order adaptors separately from P-series if

D - ST -

### Splicing Tray

- 01 For Single Fiber (D-RP-A only )
- XX Others, please specify