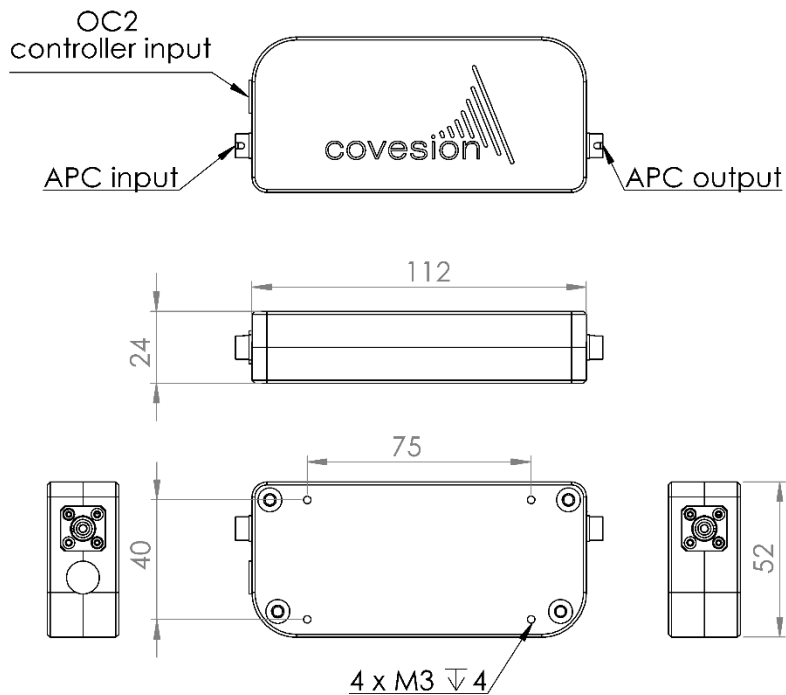


# Packaged Waveguide WG-SHG1560

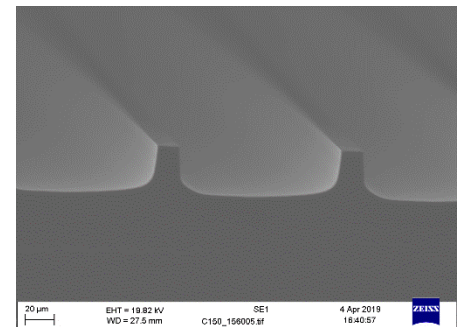
Version 2.0/2019



[Unit: mm. Image for reference only. Not to scale]



Covesion packaged waveguide



SEM photograph of waveguide

## Packaged waveguide specification

Center wavelength by chip selection [nm]	1535-1565
Temperature tuning Coeff. [nm/°C]	0.15
Temperature tuning range from ambient [°C]	30 to 70
CW pump launch [mW]	300
CW SHG output [mW]	35 +/- 5
Typical efficiency [%/W]	40
Fiber connector	PM-FC-APC
Weight [g]	345
Dimension [mm]	112 x 52 x 24



Covesion packaged waveguide use with temperature controller OC2

**Contact us with your specification to discuss availability and pricing**

Copyright © 2019 Covesion Ltd

email: [sales@covesion.com](mailto:sales@covesion.com)  
web: [www.covesion.com](http://www.covesion.com)

tel: +44 (0)1794 521 638  
fax: +44 (0)8709 289 714

